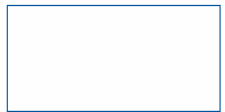
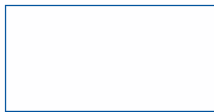
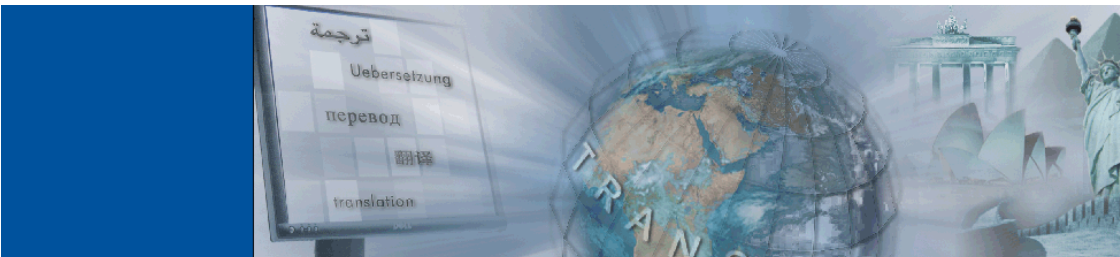


Transit

Migration



© 2008 STAR AG

All rights reserved. Reproduction of the contents of this copyrighted publication, in whole or in part, without written permission of STAR AG is prohibited. This applies particularly to the duplication or the use of the content for training courses or electronic systems.

The content of this publication has been checked to the best of our knowledge and ability. STAR AG does not assume responsibility or liability for any loss caused by or connected with the use of this publication.

STAR AG

Wiesholz 35 · CH-8262 Ramsen

www.star-group.net

STAR Language Technology & Solutions GmbH

Schönaicher Str. 19 · D-71032 Böblingen

Registered trademarks

All trade names are registered trademarks of the respective producers.

090303

Content

1 Welcome

Target group	3
For ease of navigation	3

2 Migration from Transit XV to Transit NXT

What you should know	5
New features in Transit NXT	5
What you should know	5
Changes and new features	5
Switching from Transit XV to Transit NXT	6
What you should know	6
Automatic takeover of the configuration files from Transit XV	7
Manual takeover of Transit XV files	8
Takeover of FFD files from Transit XV	8
Using reference material from Transit XV	9
Adopting projects from Transit XV	10
Migration of TermStar XV dictionaries	10




1 Welcome

Target group

This User's Guide is intended for experienced Transit users. In this User's Guide, we do not describe functions and operating concepts that are described in one of the Transit User's Guides.

For ease of navigation

In this guide, we use special symbols and fonts to make orientation easier. In tables 1-1 and 1-2 you will find these symbols and fonts, and what they mean.

	Explanation	
	Warning	Warning about serious errors. If this is disregarded, it could result in loss of data.
	Caution	Important note about preventing errors that may interfere with your work.
	Information	Note or tip that will make your work easier.

Tab. 1-1: Symbols in this User's Guide

So that you can clearly see when you need to select a menu, enter or select something, we use different writing styles in this User's Guide:

	Explanation	Example	
The ribbon bar	<p> Tabs and groups on the ribbon bar, as well as options and buttons, are shown in bold. The vertical bars () divide the tabs and groups of the ribbon bar. </p>	<p> Click on Processing Find/Replace Replace </p>	<p> The example on the left means: in the Project tab, select the Administration group and click Settings. </p>
Your input	<p> Text that you must enter using the keyboard is shown in <i>Courier italics</i>. </p>	<p> Enter <i>Valve</i>. </p>	<p> Using the keyboard, type in the word <i>valve</i>. </p>
Content of lists, messages, files	<p> The contents of dropdown lists, messages or files are shown in <i>Courier</i>. </p>	<p> Select <i>German</i>. </p>	<p> Select the entry <i>German</i> from the dropdown list. </p>
		<p> The program displays the message <i>Completed</i> successfully. </p>	<p> DCTerm shows the message <i>Completed</i> successfully in a window. </p>
		<p> Delete the entry <i>manual=ignore</i> </p>	<p> The entry <i>manual=ignore</i> appears in the file. Delete it from the file. </p>
Variable content	<p> Pointed brackets are used to identify variable content, which you must replace (including the brackets themselves) with your concrete values. </p>	<p> Enter <i><search text></i>. </p>	<p> Enter the text that you wish to search for. If, for example, you wish to search for Rabe, enter: <i>Rabe</i> </p>
		<p> Select <i><User></i>. </p>	<p> Select the appropriate user. If, for example, you wish to select the user A. Smith, select as follows: <i>A. Smith</i> </p>
File/folder name	<p> File and folder names are shown in the <i>Courier</i> font. </p>	<p> You will find the file <i>ldvd.rbe</i> in the folder <i>\config\global</i>. </p>	

Tab. 1-2: Formatting conventions

2 Migration from Transit XV to Transit NXT

What you should know Compared to earlier versions, Transit NXT and TermStar NXT provide a wealth of new functions to help you organise your work more efficiently.
This manual is intended to assist in the migration from Transit XV to Transit NXT.

New features in Transit NXT

What you should know Compared to earlier versions, Transit NXT contains a wide range of new features. These are described in detail in the Transit NXT User's Guide. This section introduces the new features that are particularly relevant for processing projects in Transit NXT in comparison to processing projects in Transit XV.

Changes and new features The following changes and new features affect the import of projects and their statistics:

- ▲ The default setting of the following import options has been changed to ensure reliable pretranslation:
 - **Ignore case:** This option is by default not selected in Transit NXT.
 - **No pretranslation if variants exist:** This option is by default selected in Transit NXT.
- ▲ The data model for the dictionaries has been expanded (see TermStar NXT - XV - Compatibility).
- ▲ Optimized fuzzy match and statistic calculation

In comparison with Transit XV, the calculation of the statistics has been optimised in Transit NXT. This mainly concerns calculation in the case of different punctuation marks. Transit NXT assigns a lower priority to differences in punctuation marks between the new segment and reference segment than text-related differences.

This means that the match between reference segment and new segment is given high priority if there are no text-related differences but merely differences in the punctuation marks.

With the same punctuation marks and text-related differences, the match is given lower priority accordingly. This means that the same fuzzy matches in Transit NXT and in Transit XV can be evaluated differently - with both higher and lower priority.

Please note

This optimisation of the fuzzy match and statistics calculation means there can be differences in the statistics in the same projects in Transit XV and Transit NXT. This does not affect pretranslated segments, i.e. with the same project settings the pretranslation result is identical. The differences only affect the evaluation of the fuzzy match quality.

If you work on Transit NXT projects in Transit XV, the statistics displayed in Transit XV are based on the calculation of Transit NXT, as Transit NXT saves the statistics information with each segment. On the other hand, the fuzzy match quality of the displayed matches during translation is calculated by Transit XV.

The reference extracts created during the import into Transit NXT are also based on Transit NXT.

Switching from Transit XV to Transit NXT

What you should know

If, during the installation of Transit NXT, you are able to access the computer on which Transit XV is installed, you can adopt the configuration files from Transit XV during the installation. If you are unable to access your Transit XV installation, you can copy the files later. During the automatic takeover of the files, certain files are adopted from the following directories:

- ▲ config/global
- ▲ config/sys

The following file types are not adopted here:

- ▲ prj (project files)
- ▲ ist (statistic files)
- ▲ prf (profile files)



Manual takeover of configuration files

Even at a later point in time, the above file types `prj`, `ist` and `prf` must not be adopted manually! They are not compatible with Transit NXT.

Automatic takeover of the configuration files from Transit XV

As already mentioned, it is possible to adopt the configuration files from Transit XV automatically during the installation of Transit NXT. A requirement for this is that access to the existing Transit XV installation is possible during the installation operation.

If you wish to use your Transit XV configuration files to work with Transit NXT, click in the following dialogue on the option **Transfer of Transit XV configuration files**.

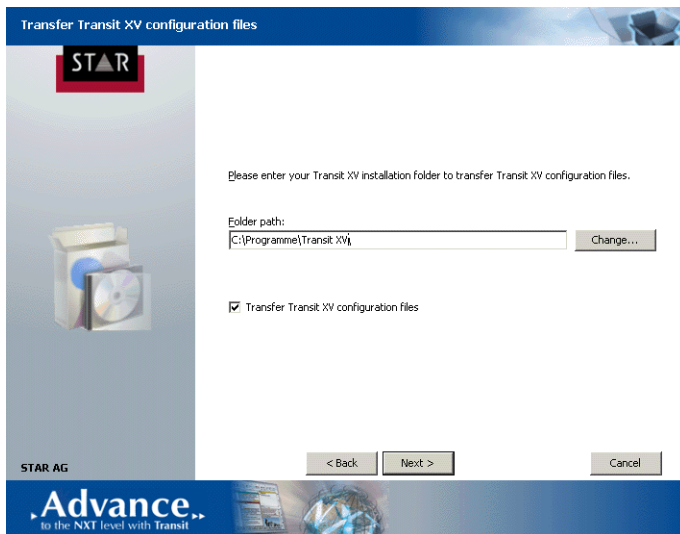


Fig. 2-1: **Transfer Transit XV configuration files** window

- 1 Select the storage location where the installation wizard will find these files.
If the proposed folder is incorrect, select **Change** and navigate to the right folder.

The following files are adopted automatically:

- ▲ Modified FFD files
- ▲ Mapping files
- ▲ Conversion files
- ▲ Lists of abbreviations
- ▲ Layout definitions

These files can also be adopted manually later.

Manual takeover of Transit XV files

You can adopt the above configuration files (except for `prj`, `ist` and `prf` files) manually at any time by copying the corresponding files from the Transit XV directory into the corresponding directory of your Transit NXT installation.

The takeover of projects and reference files is described below. Information on taking over dictionaries can be found in the User's Guide "Termstar NXT - XV compatibility".

Takeover of FFD files from Transit XV

If you want to adopt your modified FFD files from Transit XV into Transit NXT, you can copy them from the directory `Transit XV\Config\Sys` to `Transit NXT\Config\Sys`. For most modified FFD files, the files do not need to be changed. If an FFD file from Transit XV does not function correctly in Transit NXT, please contact Transit Support.



Adopting standard FFD files

Please bear in mind that it is not permitted to adopt standard FFD files from Transit XV into Transit NXT. If you copy standard FFDs from Transit XV to Transit NXT or, for example, adopt them within a project exchange, the message "A more current version of the FFD <file name> is already on your computer." appears. This informs you that the more current version from Transit NXT will not be replaced.

Using reference material from Transit XV

If you want to use your reference material from Transit XV in Transit NXT, that reference material must be converted. You run this conversion in Transit NXT. To convert the reference material, please proceed as follows:

- 1 Select **Reference material | Convert Transit XV reference material to Transit NXT** from the resource bar. Transit NXT displays the following window:

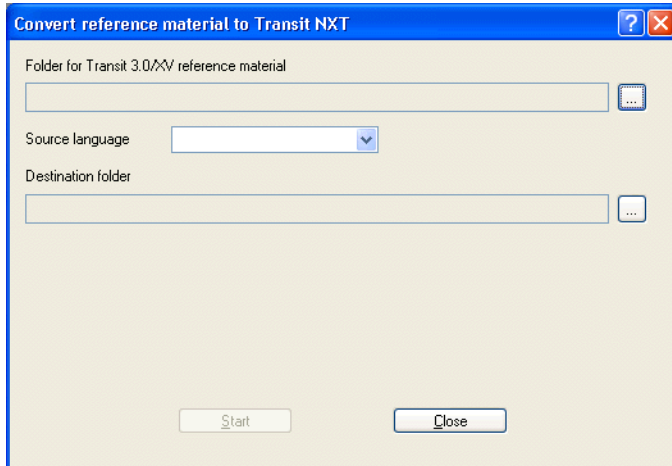


Fig. 2-2: **Convert reference material to Transit NXT** window

- 2 Specify the folder where the Transit 3.0/XV reference material is located under **Folder for Transit 3.0/XV reference material**. If there are subfolders, the files in these subfolders will also be converted.
- 3 Select the source language for the reference material from the **Source language** list. If you do not know the source language, select the "---" option. In this case, Transit NXT will determine the source language based on the timestamp for the individual segments.
- 4 Specify where Transit NXT should save the converted reference material under **Destination folder**. Any subfolders in the reference folder selected above are created in this destination folder.
- 5 Start the reference material conversion process by clicking **Start**. Transit NXT converts the Transit XV reference material into Transit NXT reference material. You can now use the converted files in Transit NXT.

Adopting projects from Transit XV If you want to adopt projects from Transit XV, you must bear the following points in mind:

- ▲ The projects you want to adopt must have been concluded.
- ▲ If you also want to adopt the project settings, you have to send the project in Transit XV as a `PXF` and unpack this in Transit NXT. Check the settings of the new functions in Transit NXT and change them if necessary. Please consult the Transit NXT User's Guide for additional information.



Adopting PRJ files

It is not possible to copy PRJ files from Transit XV to Transit NXT. Projects must always be exchanged by sending and unpacking.



Identifying Transit NXT projects

We recommend that you differentiate TermStar NXT projects, e.g. by adding a suffix to the name of the existing TermStar XV projects.

Example: `TransitNXT_SampleProject`

Migration of TermStar XV dictionaries The database structure of TermStar NXT dictionaries has been extended in comparison with TermStar XV, i.e. TermStar NXT enables the user to enter even more information. This is why the TermStar XV dictionaries must be migrated into TermStar NXT. More information can be found in the document "TermStar NXT - XV compatibility".